



# On the RIVER

*Connecting ALVA Florida NEIGHBORS and NEIGHBORHOODS*

TO SUBSCRIBE or offer articles (maximum 300-500 words) or to send jpeg photos of Alva area happenings, or to contact the publisher/editor with any questions, email Ken DeWalt [kendewalt@ontheriver.org](mailto:kendewalt@ontheriver.org). The deadline for receipt of any materials is the 15<sup>th</sup> of the month previous to the month you wish the articles to run. Issues go out before the 1<sup>st</sup> of each month, and are subject to editing if necessary.

Now accepting advertisements. See our terms on the last page of this newsletter.

We encourage all subscribers to consider patronizing the paid advertisers you find at the conclusion of this newsletter. Their support of our mission helps us provide you with this local Alva area newsletter.

ALSO SEE...

[www.ONTHERIVER.ORG](http://www.ONTHERIVER.ORG) Archive of all OTR newsletters and lots more, all FREE including a link to [www.ALVAFL.org/newsletter](http://www.ALVAFL.org/newsletter) to see previous the publisher's Alva newsletters archived since 2010

---

**PLEASE CONTACT any event sponsor promoted in the ON THE RIVER newsletter before deciding to attend to check the latest scheduling plan for dealing with the COVID-19 VIRUS PANDEMIC**

***And PLEASE follow all safe distance, washing and dress guidelines.***

---



## ALVA INC

Join us to learn what's happening, and how you may be a part of what's happening as Lee County Grows eastward toward our country haven. [www.ALVAFL.org](http://www.ALVAFL.org)

Contact Emily Smith, treasurer, at [emilysmith@msn.com](mailto:emilysmith@msn.com) to join.

Dues are only \$25.00 a year

**NEXT MEETING: TBA Second Tuesdays, 7pm, Alva Community Center**

# Alva Boat Ramp closes for long awaited renovation project



(TY Betsy Clayton) Fort Myers, FL, April 27, 2020 – The Alva Boat Ramp, located at 21580 Pearl St., today has closed for improvements and renovations and is expected to reopen in late August in time for Labor Day weekend. Boaters can use nearby Davis Boat Ramp along the Caloosahatchee River, 2227 Davis Blvd., Fort Myers.

The Lee Board of County Commissioners in November voted to award the contract to Kelly Brothers in the amount of \$495,371.95 to renovate the Alva Boat Ramp. The project is funded by boater registration fees.

The renovations include widening the boat ramp from one lane to two and replacement of the boarding dock. Parking lot improvements include ADA accessibility. The boat ramp provides access to the Caloosahatchee River upstream of Franklin Locks for residents and visitors in eastern Lee County and was originally dedicated in 1990.

For more information on Lee County Parks & Recreation, visit [www.leeparks.org](http://www.leeparks.org) or visit [leeparksandrecreation](#) on Instagram.





## ***Local farms selling produce on-site – Prices drop as supply chain retools***

(TY Chris Felker, Caloosabell News, abbreviated)

Because of supply-chain disruptions due to the coronavirus crisis, some Florida farmers are bypassing the middlemen out of necessity and selling their fresh produce directly to the public on their farms, reports UF/IFAS Regional Vegetable Extension Agent Emeritus Gene McAvoy.

These sales may be key to their staying in business through the pandemic and emerging intact on the other side. The “Produce BlueBook,” an industry publication, reported April 6 that fresh produce purchases by consumers have been lagging far behind sales of other groceries during the COVID-19 pandemic.

It’s important to encourage fresh produce consumption by providing tips about items for now and items with longer shelf-life to have ample fresh fruit and vegetables for the entire week,” said Joe Watson, vice president of membership and engagement for the Produce Marketing Association (PMA).

Sales of fresh produce were up 8.1% during the week of March 29-April 4; however, in sharp contrast, shelf-stable item sales were up 51% and frozen items, 41.6%.

Stated Mr. Watson: “The produce industry is a resilient business, but farmers and producers of fresh fruits and vegetables need our support now more than ever as many restaurants are doing a fraction of their normal volume and this is having downward pressure on prices. We are actively working to connect supply with shift in demand from food service to food retailing and fresh to frozen and canned. Additionally, it is important to reassure Americans that fresh produce is safe and emphasize the very important role of produce in building the immune system.”

Consequently, Mr. McAvoy, who now serves as associate director for stakeholder relations at the University of Florida/IFAS Southwest Florida Research and Education Center in Immokalee, has been spreading the word on how Floridians can help support their neighbors who feed Americans from the land. On April 8, he disseminated to his broad network some up-to-date information on regional farmers now selling directly.

Mr. McAvoy asks that if any reader or a company they know of is selling product to the public, please email [information@ffva.com](mailto:information@ffva.com) as soon as possible with this information — company name, address of sales location, phone number, Facebook page and/or website, produce available for sale and sales hours. The FFVA will share on social media and on its website, and he will also disseminate the information via other channels.



HEALTH PLANNING COUNCIL  
of Southwest Florida, Inc.

CONNECTING THE COMMUNITY WITH HEALTH RESOURCES

## COVID-19 Guidance for ACA (Obamacare) Insurance

The Health Planning Council of Southwest Florida (HPCSWF) has been serving Florida residents over the last seven years by helping consumers navigate the sometimes-confusing coverage options for ACA (Obamacare), marketplace health insurance. We are facing the most severe health crisis of our lifetime with the COVID-19 pandemic. Considering the expected surge in unemployment numbers in Florida combined with the potential hazard of in-person meetings, HPCSWF Navigators are prepared to assist.

If you find yourself being laid off due to business decisions related to the health crisis, the current rules provide a sixty-day eligibility window for you and your family, called a Special Enrollment Period, to sign up for a suitable health coverage plan available in your county. Please do not wait until the last minute to seek help figuring out which plans are best for your health care needs. As Information changes, HPCSWF will be doing our very best to keep consumers updated through our website and social media outlets.

ACA enrollees can get personalized help discussing the often confusing details of health care coverage. Consumers can call at 1-866-547-2793 or go to [www.enrollswfl.com](http://www.enrollswfl.com) to set an appointment to meet with a certified navigator virtually or telephonically. Consumers can also call the marketplace phone number which is available seven days a week, 24 hours a day.

We wish good health for all Floridians, but in the event of a health care need, its best to know that you can #GetCovered and #StayCovered. Please follow your local health department, government and CDC websites for updated info on the COVID-19 crisis.

Jurnide Jerome Denis, Outreach and Education Coordinator

Email: [JurnideJerome@hpcswf.com](mailto:JurnideJerome@hpcswf.com)

Office: 866.547.2793

Cell: 239.240.7117

<http://www.hpcswf.com>



**Want to make a difference? Come to the  
Lee Health Bloodmobile at Alva United  
Methodist Church on Sunday May 3rd  
between 8am-12 noon and give the Gift of  
Life.... your blood!**



241 North Bridge Street, Labelle, Florida

[www.firehousecommunitytheater.com](http://www.firehousecommunitytheater.com)

863-675-3066

**FALL  
2020/Winter-  
Spring 2021 shows  
will appear here  
when announced**



**Give TIME. Give MONEY. Give  
FOOD.**

**To make a donation, call (239) 334-  
7007 or visit  
[harrychapinfoodbank.org](http://harrychapinfoodbank.org).**



**Harry Chapin Food Bank  
OF SOUTHWEST FLORIDA**

*Fighting Hunger, Feeding Hope*



## **MEDICARE SCAMS amid the COVID-19 Pandemic**

You may already be taking steps to protect your health during the COVID-19 emergency. Be sure to also protect your identity from scammers by guarding your Medicare Number.

It's easy to get distracted and let your guard down during these uncertain times. Scammers may try to steal your Medicare Number. They might lie about sending you Coronavirus vaccines, tests, masks, or other items in exchange for your Medicare Number or personal information.

Protect yourself from scams:

- Only share your Medicare Number with your primary and specialty care doctors, participating Medicare pharmacist, hospital, health insurer, or other trusted healthcare provider.
- Check your Medicare claims summary forms for errors.
- Visit [Medicare.gov/fraud](https://www.medicare.gov/fraud) for more information on protecting yourself from fraud and reporting suspected fraud.

Note: You can learn more about COVID-19 and your Medicare coverage on [Medicare.gov](https://www.medicare.gov).



## ZOOMING through the 2020 Pandemic!



Except for those of us who have worked with tech connections from home, or on the road in the past the word 'zoom' used to mean nothing more than a fast pace, a comic book descriptive or maybe just the way we drove when the light turned yellow. But today, in a world of forced home stays, business and travel lockdowns and Coronavirus fears this online communication platform and others like it (Microsoft Teams, GoToMeeting, Google Hangouts, etc) are a new way to have a family gathering, worship, take a class and of course attend meetings.

I'm awfully new to this tech connectivity myself, though in order to assist a small Bible Study group I co-lead, take some online training, meet with the Charleston Park Planning Committee, etc, I have had to learn. And there IS a learning curve; at least for the person who wants to host such a meeting. So where do you begin?

Let me start by saying you start with the free training the platform you choose offers. And every platform is as different as the type of credit card machine is in each of the stores and restaurants we used to go to regularly. I chose the platform others around me were using most and that was [www.ZOOM.us](http://www.ZOOM.us).

I downloaded the APP to my laptop, tablet and phone. That took a while. Despite publishing this newsletter and creating the simple On The River website, [www.ONTHERIVER.org](http://www.ONTHERIVER.org), with the WIX.com program I am a pretty clueless techie. And helping others just get the APP on their devices so they could join ZOOM meetings, well...let's just say a few hours with them on the phone and my device helped me learn more about ZOOM too.



Then came the ZOOM free training videos. From 30 minutes to two hours, you decide what you need to know to do what you want to do. I only wanted to lead discussion groups so the huge amount of graphic aids, flashy special effects, and gear (green screen backdrop, microphone headset, external quality video camera, etc) are not needed by me. And the ZOOM training is FREE. And their live chat and phone support, even at this overworked time, is really good. And the meetings themselves are of an excellent quality (despite the occasional glitch- just restart the meeting and keep

going), especially since their FREE program use now offers unlimited length of online meetings, while the pandemic exists anyway.

For the guest, non-host ZOOM participant, there is a learning curve beyond the APP download but it involves little other than learning how to navigate a couple essential icon controls on their ZOOM screen once connected to a meeting (the ZOOM screens do work differently depending on the size of the screen you are viewing on (lap or desktop, tablet, phone). Some can figure out faster than others where the microphone and video camera controls are. So far no participant has just given up.

My advice if you are tempted to connect your Alva life digitally to the rest of the universe online: look for a friend who is using the program you want to use and have them, and that program's training support, get you started. One this seems sure, we may be meeting this way for a long time, Covid-19 or not. ZOOM and its ilk really does bring the whole world together.



Are any ALVA folk interested in sponsoring bus stop tables for their children? **CONTACT:** James Branham, Director, at [swfloridashield@yahoo.com](mailto:swfloridashield@yahoo.com)



**Shield 4 Kids**  
**Bus Stop Table**  
**Poker Run**  
**Event date**  
**June 20 th**  
price for rider and guest  
\$25 for 1st Rider and \$15 for each additional hand  
**Registration Starts @ Haus of Trikes**  
2nd Stop Pep Boys Ft Myers  
3rd Stop Unique Hair Styles  
4th Stop El Trasco Lehigh  
**Finish Up at Mugs N Jugs Lehigh**  
**First out @9 am** **Last in @5 pm**  
Refreshments Raffles 50/50 FREE Giveaways Trophies  
Silent Auction  
All proceeds goes towards the purchase of more Tables for the bus stops for the children  
**Pre-Register on our Facebook Page**  
**SwFloridashield@yahoo.com**  
**[Http://facebook.com/shield4kidslehigh/](http://facebook.com/shield4kidslehigh/)**  
Made with PosterMyWall.com



**Charleston Park Neighborhood Association**

- Community Center Activities & Training
- Lee County Children's and youth sport park
- Events throughout the year
- Meetings for all every second Monday of the month at 6pm at the Community Center

**ALL return after the pandemic**

**2541 Charleston Park Drive, Alva, FL 33920**

**239-728-8895 , [Charlestonpark1926@gmail.com](mailto:Charlestonpark1926@gmail.com)**



**Most Goodwill Southwest Florida retail stores have temporarily closed until further notice.**

Stores in the small communities of Immokalee and Clewiston will remain OPEN.

Donations are still being accepted! Select Donation Door drive-through's and most Attended Donation Centers (ADC) will be open from 10 am - 6 pm

**SHOP ONLINE:** You can continue to shop Goodwill online right from your own home. There are all kinds of amazing deals to be found from vintage video games to beautiful diamond jewelry. Tons of new items every day.

If you set your filter to Southwest Florida, you can help keep the job services programs available for those in need in our community, and pick-up at the Opportunity Center in Ft. Myers - saving the shipping! Now, more than ever before, Goodwill needs your help to keep our mission going.



**BREAKSPOTS during the COVID-19 Pandemic**

Lee County Schools are providing kids meals at key drop off points around the county for school children who can't be in school. Today, Tuesday April 14<sup>th</sup>, while on a Charleston Park Neighborhood Association errand, with the temperature hovering around 96 degrees I found a team of servers from the Alva School providing meals out of an air conditioned school bus.

These three ladies, along with a not photographed police escort are part of our local Alva effort to get meals to children who need them and families are driving up. In fact while I was present a child walked up to receive her packet which contained two milk cartons and two basic meals, bagged and safe to handle.

This Coronavirus crisis is both frightening and depressing. But for all of us, it's a chance to see how kind and generous we South Floridians, Americans, Citizens of the World can really be to each other.

In this case these three women, and their uniformed protector, deserve Alva's utmost thanks.





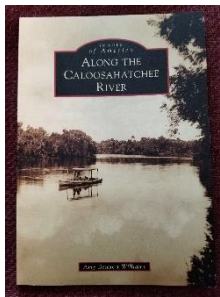
# A bit of ALVA History

Glimpses of Alva, Florida, the way we were

## BROADWAY STREET

Thanks to Amy Bennett Williams book

Along the Caloosahatchee



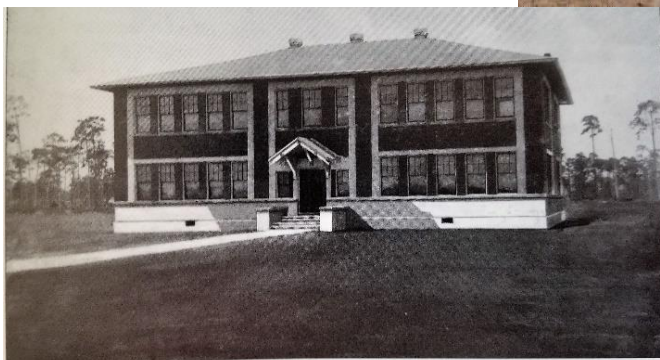
An 'Images of America' volume from  
Arcadia Publishing, 2011, ISBN: 978-0-  
7385-8747-9



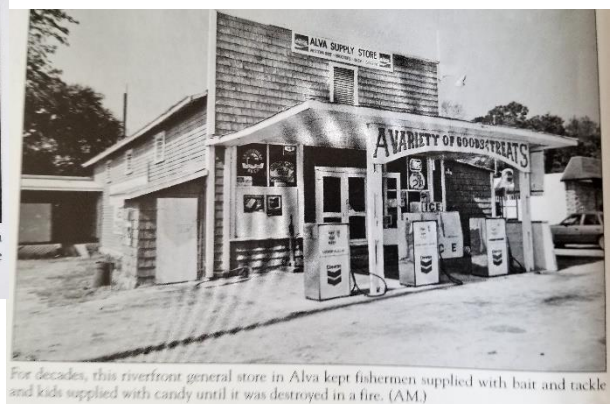
Pictured is Alva's first store in 1886. This site, which was the ferry landing, is now the end of the bridge. According to the caption on the photograph, the men pictured include Judge Williams, Ben Clay, Tom Hickey, and Jack Clay. (AM.)



This is a 1916 view of what is now Broadway in Alva at the north end of the bridge. From left to right, the buildings are Heitman Store, Ramsay Store, the Market, Mr. Parkinson's office, and the Alva school. (AM.)



Built on land donated by Capt. Peter Nelson, Lee County's first masonry school was built in Alva with bricks made from sand hand-dug from the English homestead. The schoolyard had to be fenced to keep cattle from wandering in. (HFA.)



For decades, this riverfront general store in Alva kept fishermen supplied with bait and tackle and kids supplied with candy until it was destroyed in a fire. (AM.)



# Lee County reopened walking, biking trails in most county parks

(TY News Press, April 22)



Lee County has opened hiking trails in nearly all of the county parks as well as Conservation 20/20 trails, a first step in a process that could lead to the eventual reopening of local businesses.

County commissioners approved a recommendation from County Manager Roger Desjarlais to reopen all of the parks with walking trails, with the exception of Lakes Park in south Fort Myers. The county will also open 20/20 properties that have hiking trails. Playgrounds and pavilions will not open.

County officials say the goal is to let people get outside and get some exercise, while keeping to the social distancing standards credited with lowering the rate of the spread of the COVID-19 virus.

County parks remain a popular destination amid COVID-19 outbreak. Six Mile Slough in Lee County is quiet but had a steady stream of visitors Monday afternoon.

Deputy County Manager Dave Harner said the trails in many parks and in at least a dozen of the 20/20 properties will allow people to keep to the social distancing while walking in groups of no more than 10 people.

"The reason we are looking at opening trails first is because that is the easiest thing to open," Harner told county commissioners. "We will ask staff to monitor and allow social distancing. This would be consistent with Collier and Charlotte counties; both those counties have their trails open."







Reducing Hunger, Improving Lives  
Worldwide

The global farm is not only a hands on training ground for those searching for help in tropical agriculture, but also an educational tool to make the public aware of hunger related issues and the answers there are to alleviate malnutrition and starvation.

17391 Durrance Road, North Fort Myers, FL 33917 | 239.543.3246 |

[info@echonet.org](mailto:info@echonet.org)

<https://www.echonet.org/>



**Global Farm Tour Schedule: ON HOLD until it is safe to start them again**

Tuesday thru Saturday (Dec. thru April): 9:30 and 1:30

Tuesday, Friday & Saturday (May thru Nov.): 9:30

Closed Sundays and Holidays



There are six fenced-in "Dog Parks" which allow for off-leash play. On-leash dog walking is allowed at many locations (listed below).

Dogs must be accompanied by an adult and must remain on-leash at all times while walking in the park.

Find out more at: <https://www.leegov.com/parks/dog-parks>



## Six Mile Cypress Slough, Lee County Park

7751 Penzance Boulevard, Fort Myers, FL. 33966

A mile of wonder 30 minutes away from Alva.



## Manatee Park

10901 Palm Beach Blvd,

Fort Myers, FL 33905

**Find out how many manatee are IN! 239 690 5030**



## Olga Community Park

2325 S Olga Dr, Fort Myers, FL 33905

(239) 533-7275

**Home of Alva area AFTER SCHOOL program**



## Hickey's Creek Mitigation Park

**17980 Palm Beach Blvd, Alva, FL, 33920**

-Great for quiet creek kayaking.

-Fun for walks and picnics.

## ALVA BOAT RAMP PARK

**21580 Pearl St, Alva, FL 33920**

Public boat ramp with 15 parking spots. Parking fee is \$5 per day. Lee County Parking Stickers are valid at this location. Parking fills up early on weekends.



## W.P. Franklin Lock & Dam South Recreation Area

**Franklin Lock Rd. , Alva , FL 33920. Contact: (239) 694-2582**



WP Franklin South Recreation Area is a day use area located on the Caloosahatchee River adjacent to the WP Franklin Lock and Dam. Visitors can watch boats traversing the 152 mile Okeechobee Waterway



## Alva Community Center PARK

**21471 North River Road, Alva, FL 33920 , (239) 728-2882**

**Three of the many activities here:**

**The Alva Community Center is part of the Alva Community Park, behind the Alva Middle & Elementary Schools.**



## Caloosahatchee Regional Park

**19130 North River Road, Alva, FL 33920 (239) 694-0398**

**EMAIL: [leeparks@leegov.com](mailto:leeparks@leegov.com)**

**Shelter rentals, primitive tent camping, Horse and bike trails.**



## NORTH FORT MYERS Recreation Park

**2000 North Recreation Park Way, North Fort Myers, FL 33903,**

**This park features an 18 hole Disc Golf course , call (239) 297-8916**



# Veterans Park Recreation Center

55 Homestead Road South, Lehigh Acres, FL 33936

Contact Information (239) 369-1521  
[DFlora@leegov.com](mailto:DFlora@leegov.com)



## ALVA FIRE CONTROL & RESCUE SERVICE

2660 Styles Road, Alva, Florida 33920

(239) 728-2223

**Thank your FIRST RESPONDERS today.**

**They are on the front line of the COVID-19 Pandemic FOR YOU**



Lee County Conservation 20/20 manages 48 preserves spread throughout Lee County, including within the boundaries of most cities. These preserves combined total nearly 30,000 acres.

All preserves are open to the public for hiking, wildlife observation, and nature study. Several preserves offer additional recreation opportunities, including fishing, kayaking and canoeing, and horseback riding. Search recreation activities online or download recreation and amenities chart online.

Preserves are open daily during daylight hours. Access may be limited at certain locations due to temporary flooding, special restoration projects, or isolated location.

Information about each Conservation 20/20 preserve can be accessed from the website:

<http://www.leegov.com/conservation2020/preserves>



*Alva Scrub Preserve*



*Bob Janes Preserve*



*Olga Shores Preserve*



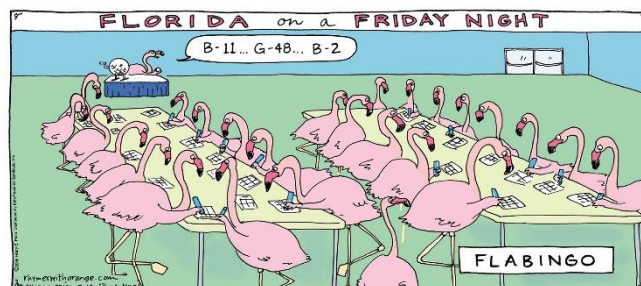
*Daniel's Preserve at Spanish Creek*



*Buckingham Trails Preserve*



*Telegraph Creek Preserve*



# Lee County parks, beach sites reopened

(TY News Press, Apr 28)

Lee County commissioners unanimously voted to reopen beaches and parks during an emergency meeting Tuesday. County parks and preserves, including all beaches and beach access points, parking lots, and free-standing bathrooms, reopen Wednesday.

People can sunbathe, exercise, bring coolers and chairs, but groups must be less than ten people and should practice social distancing. Parks and preserves will open with regular hours — beaches open from dawn to dusk.

## **Recommended guidelines for the beaches and parks include:**

**All individuals, when in public, should maximize physical distance from others, maintain a minimum of 6 feet, Social settings of 10 people or more should be avoided, where appropriate distancing may not be practical, Vulnerable individuals should continue to stay home**

## **Lee County Beaches include:**

### **Beach Parks**

Bonita Beach Park

Bowditch Point Park

Bowman's Beach Park

Causeway Islands

Crescent Beach Family Park

Little Hickory Island Beach Park

Lynn Hall Memorial Beach Park

San Carlos/Bunche Beach Preserve





**Beach accesses to open:**

Turner Beach Park Beach  
Accesses

Alison Hagerup Beach Park

Andy Rosse Lane Park

Boca Grande Beach  
Accesses

Bonita Beach Accesses

Dog Beach Park

Estero Island Beach Accesses



**The Commissioners voted that the following amenities at all Lee County locations will remain closed:**

**Pavilions, recreation centers, Soccer, lacrosse and football fields, Basketball courts, Piers, Splash pads and Pools**

Baseball and softball fields will reopen, but there will be no league play and no access to dugouts or bleachers. These fields will be for groups of 10 or less who want to practice baseball or softball.

Baseball and softball fields will reopen, but there will be no league play and no access to dugouts or bleachers. These fields will be for groups of 10 or less who want to practice baseball or softball.

All dog parks will reopen, but there will be no seating areas provided. People will need to bring their own chairs and take them home when they leave.

While there are no restrictions for beaches, the Lee County Sheriff's Office will be monitoring those areas to ensure people follow CDC guidelines.

There will also be county staff will make hash marks on the walkways at high-use tennis and pickleball courts and other areas to help guide the public of social distancing if there is a waiting line.

All parking fees will go back into effect under this reopening to help with congestion and turn over that occurs at high-use park sites with parking fees.

## Health Happenings



Debra Carney, A Faith Community Nurse is a licensed registered nurse who intentionally cares for her congregation, Alva United Methodist Church, in body, mind and spirit throughout their lifespan. I can be reached at [carneydeb@hotmail.com](mailto:carneydeb@hotmail.com) or 292-3416.

Look to the Lord and His strength; seek His face always. 1 Chronicles 16:11

**Are you sick of hearing the words Coronavirus? Here are some thoughts:**

**Deep Breathing** is a necessary tactic to survive stress and calm your heart and mind. While in a relaxing position, take a deep breath in, as your abdomen rises, and count to 3. Exhale through pursed lips as long as you can, but at least to the count of 5. Do this often. A quick fact...babies are abdominal breathers straight from the womb!

**Do you take Vitamin D?** It is the sunshine vitamin and a hormone. Some suggest it could be called the "Immunity Vitamin." Take it in the form of D3 and get your blood level checked...it should be about 50ng/ml.

**What about wearing gloves** when out and about? It's tricky and a great setup for cross-contamination. It is better to wash your hands and keep hand sanitizer close by. This will protect you and everyone you come into contact with!

**Have a loved one in a healthcare facility** and need to be their advocate? That's a huge challenge! Remember through your frustration you can always call the nurse, the charge nurse, even the nursing supervisor. Also the chaplain could be a great advocate.

**Medication errors are a big problem.** Medication errors frequently occur during any type of transfer, such as from hospital to home or from hospital to nursing home, wherever continuity of care changes. The correct medications can get lost in the transit. Here is one example:

You are admitted to the hospital for back pain. You were taking Coumadin for your weak heart. During your hospitalization, the Coumadin was stopped in order to have an invasive test, and never restarted. You develop a blood clot and the Coumadin gets restarted. You need more medical care due to the medication error and this risks your life.

**One way to celebrate the end to quarantine** would be to participate in THE NATIONAL DAY OF PRAYER on Thursday May 7<sup>th</sup> (IF it comes by this date- though why not celebrate the love of God for us no matter what). Usually there are venues across America, praying to God in unison, at the noon hour. This year the prayer verse is from Habakkuk 2:14, "For the earth will be filled with the knowledge of the glory of the Lord as the waters cover the sea." Go to [www.nationaldayofprayer.org](http://www.nationaldayofprayer.org) for more information, encouragement and ideas on how to beg God's provisions and protections on America!



**Want to make a difference? Come to the Lee Health Bloodmobile at Alva United Methodist Church on Sunday May 3rd between 8am-12 noon and give the Gift of Life....your blood!**

## **WE ARE STILL DELIVERING!**

**Fort Myers MEALS ON WHEELS now serves homebounds of any age and for any short or long term need in the **ALVA** area!**



Our caring Meals on Wheels volunteers provide daily, nutritious home-delivered meals and a friendly, safety and security check to eligible homebound neighbors who cannot shop or cook for themselves. These neighbors include seniors, the disabled, or chronically ill adults under the age of 60.

**To become a volunteer driver/deliverer to clients, or to become a client receiver of meals and other services, please contact:**

**Rose Goree-Lawrence, Admin. Asst., PO Box 2143, Fort Myers, FL 33909 or call her at 239-337-1055 or email her at [Rose@CommunityCooperative.com](mailto:Rose@CommunityCooperative.com)**

## **Fight for the Light at SR31 and SR78**

If you are a concerned resident or worker in Alva, North Olga, Babcock Ranch or North Fort Myers, Florida, please sign this petition and help Fight For The Light!

Sign the petition on here or FACEBOOK now:

[www.thepetitionsite.com/960/363/539/fight-for-the-light-at-sr31-and-sr78/](http://www.thepetitionsite.com/960/363/539/fight-for-the-light-at-sr31-and-sr78/) Sue Bisplinghoff, 239 980 2470



Lee County Sheriff's Office Sheriff Carmine Marceno, in partnership with the Sheriff's Youth Activities League (SYAL), the Florida Sheriffs Association and title sponsor Allstate present the Teen Driver Challenge!

*This course teaches techniques and life saving skills used by professional drivers in a "hands-on" driving environment. Students learn vehicle dynamics, safe driving practices and responsible decision making through the classroom and driving exercises.*

## **2020 SCHEDULE**

January 3 & 4	April 10 & 11	July 17 & 18	October 9 & 10
January 24 & 25	April 24 & 25	July 31 & August 1	October 23 & 24
February 14 & 15	May 8 & 9	August 14 & 15	November 6 & 7
February 28 & 29	May 15 & 16	August 28 & 29	
March 13 & 14	June 5 & 6	September 11 & 12	
March 27 & 28	June 19 & 20	September 25 & 26	

Class on Fridays (5pm—8pm) and closed course driving on Saturdays (7:30am—Noon) held at:

Lee County Sheriff's Office Community Outreach Center Miromar Outlets  
10801 Corkscrew Road Suite 190, Estero, FL 33928

Please call to register (239) 561-TEEN (8336)



**BETTER DRIVERS, SAFER ROADS**



# ***Important Message from Lee County Sheriff Marceno***



What would you do if you saw a stranger in your neighborhood looking into windows of parked cars? Would you recognize this as suspicious activity and call police, or would you assume someone else already called? Perhaps, you would hesitate to call and report your suspicions for fear of being thought of as the neighborhood busy-body?

During a recent car burglary investigation, the Sheriff's Office learned a resident had observed individuals trying to get into cars in the neighborhood, but did not call law enforcement. Instead, the resident shared security camera footage of the suspects on a video neighborhood app inquiring if neighbors recognized the suspects. Unfortunately, by the time our agency was notified, the suspects were long gone.

Preventing crime is a community effort and we need your help to keep our Lee County communities, safe. We encourage you to immediately report something you consider to be out of the ordinary or suspicious. If your suspicions are wrong, that's o.k. too. Just think about what the outcome could have been had your suspicions been right, but you didn't make the call.

What number should you call? There are two different phone numbers with two distinct functions for reporting crime. Below is an explanation of when it is appropriate to dial either 911 or our main phone number:

1. 911 - If there is a life threatening emergency or you feel a crime is in progress and that the safety of you and those around you are at risk, dial it! It could be a car crash, a drunk driver, a robbery, someone with a weapon, or a physical altercation. Quite simply, an emergency is any situation requiring immediate assistance from the police, fire department or ambulance.
2. 477-1000 – All non-emergency calls for past occurred offenses such as a car break-in, theft, vandalism, lost property, suspicious narcotics activity, harassing phone calls, as well as other incidents not in progress can be reported by calling our main number.

At this time, you cannot text or email 911 for help in Lee County though new technology and regulations are anticipated that will make this possible in the future. For more information on this subject, call the sheriff's office Community Response Unit at 239-477-1CRU.





TOMMY DOYLE, SUPERVISOR OF ELECTIONS

## LEE COUNTY ELECTIONS

### NOW IS THE TIME TO VOTE-BY-MAIL

Our mission to deliver superior election services to the voters of Lee County continues to be a priority. In response to these unprecedented times, and with the safety and security of voters and elections staff in mind, the Lee County Supervisor of Elections urges voters to Vote-by-Mail.

Voting by mail is the most convenient option when voting. Save time and take your time. Vote at home and the return postage is paid!

To request your Vote-by-Mail ballot or to renew your request for the 2020 federal, state, and local elections, visit [www.Lee.Vote](http://www.Lee.Vote)



Lee County Elections



Lee\_Elections



@LeeSOEPIO

[www.LEE.VOTE](http://www.LEE.VOTE)

(239) 533-8683

### USS Hannah Chapter, Alva Daughters of the American Revolution



A few years ago the USS Hannah Chapter, Daughters of the American Revolution Chapter (DAR) took to doing cleaning and refurbishing of veterans graves at The Alva Cemetery. Some grave stones needed cleaning just to be able to read the names and others were so overgrown with weeds and ant hills they were difficult to find. In 2018, our chapter began working with Wreaths Across America to get donations for wreaths to be placed on each veteran's grave to honor them for their service and sacrifice to our country. We would

like your help to be sure we honor all veterans buried at Alva Cemetery. In fact, at the 2019 Wreaths Across America Nation Day, we received 5 more names to get to the number of 130 now. You can contact me and let me know a name and I will check my list and make sure the person is listed. If you know the location of the grave, section and row, that is also helpful. Some gravestones don't have an indication of military service. Thank you for helping us honor all of Alva's veterans. Georgette Lundquist, [jglundy7@gmail.com](mailto:jglundy7@gmail.com)





*Southwest Florida Cooking by*

*MAGGIE McMann*

*of Oak Park, Alva*

Contact Maggie to find out more at: [Maggi1rn@att.net](mailto:Maggi1rn@att.net)

## Shrimp Paella

11/2 pounds jumbo shrimp

1tsp smoked paprika

1 tsp thyme

1 tsp salt 1/4 tsp black pepper

Minced garlic clove

Chopped fresh parsley

Cut shrimp into chunks. Mix spices with 1 tsp water to make thick paste. Coat shrimp and set aside.



Heat 1 c chicken stock until hot and add 1 tsp saffron threads.

Set aside 20 minutes. (This allows saffron to release its flavor, so don't cut corners).

Small onion minced

4 Tbsp olive oil

Sauté in skillet or paella pan.

Add 1lb arborio rice to skillet.

Cook about 5 minutes, stirring. Add 2 c chicken stock and cover and simmer. When 20 minutes is up on saffron, add that cup to rice and cover again. Simmer until its not soupy, about 10 more minutes. Add shrimp, do not stir....cover and cook on low 10 minutes.

Enjoy!



**Calusa Waterkeeper is a non-profit organization dedicated to the protection of the Caloosahatchee River & Estuary in Southwest Florida.**

### **Join Our Team! Become a Certified Ranger**

Participants should have access to area waters by boat or paddle craft. No prior experience needed. Classes held at the Calusa Nature Center, Iona House. [info@calusawaterkeeper.org](mailto:info@calusawaterkeeper.org) 239) 784-0880



## **JUST BE KIND**

Polly Kiely of Alva was inspired to begin an Alva sign movement when she learned of a Central Indiana youth project started in 2015.

To find out more about Polly's local efforts and how you may become a part of them contact Polly at: [pbkiely@embarqmail.com](mailto:pbkiely@embarqmail.com)



### **Your RIVERDALE LIBRARY**

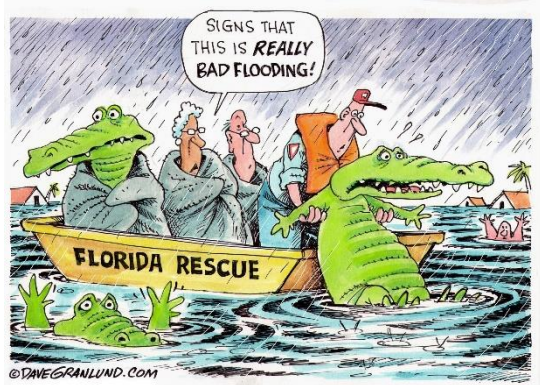
**Location: 2421 Buckingham Road,  
Fort Myers, FL**



Hours: Tuesday (Noon-8), Wednesday and Thursday (10-6), Friday and Saturday (9-5), Closed Sundays and Mondays Contact: 239-533-4370, Branch Manager: Alyssa Diekman. For more information, please visit us at [www.leelibrary.net](http://www.leelibrary.net) or call 239-479-INFO.

## **COVID-19 Update**

**The health and safety of our community members are of the utmost importance to Lee County Government. With this being said, in an abundance of caution, Lee County is closed.**







**Alva Angel's** Giving back to the families of our community

Please like us on Facebook Alva Angels, LLC for more information.



## **ALVA GARDEN CLUB**

**Open to EVERYONE!**

<http://www.fmlcgardencouncil.com/council-directory/102/alva-garden-club/>

### **Upcoming Alva Garden Club Meetings**

**Third Tuesday October through May @ 2:00 PM**

**May 19, 20: Audubon Society/Birds**

## **The ALVA MUSEUM**

**A visit worth your time!**

**in the historic Alva Library Building,  
one of the oldest library buildings in  
existence anywhere in Florida**

**the Alva Garden Club, invites you to  
contact them (see website above) for  
a private tour of the museum or to  
visit during open hours, October  
through May any Saturday afternoon,  
2 to 4 pm.**



[www.alvaflmuseum.com](http://www.alvaflmuseum.com)

**The Museum will be closed until October 2020 due to COVID 19.**



**We are now hiring for Summer 2020!**

We have counselor and program positions still available. Head to our website for your application today.

Send questions to [jennifer@flriverside.org](mailto:jennifer@flriverside.org)

Sign up now to join us for our Mom and Me retreat this April! This will be a great weekend of fun for Moms and children of all ages! Email [kimi@flriverside.org](mailto:kimi@flriverside.org) with any questions and how to register.



**Summer camp registration is now open!**

Be sure to register your camper to join us this summer! We are offering 10 weeks of day camp and 4 weeks of overnight camp.

Head to our website to register your camper today!

Questions? [jennifer@flriverside.org](mailto:jennifer@flriverside.org)



Lee County's newest professional theatre is located at The Shell Factory & Nature Park, North Fort Myers. Directions can be obtained by Googling Players Circle Theatre. Parking is free. Reservations for all performances may be obtained by calling 239-800-3292 or clicking on

[www.PlayersCircle.org](http://www.PlayersCircle.org).

**FALL 2020/Winter-Spring 2021 shows will appear here when announced**

### **Boaters, please continue safe distancing on and off board**



As reported by Fox News 4 during a press conference on Thursday, March 26<sup>th</sup>, Lee County Sheriff Carmine Marceno had this to say to those in the area:

"We realize you can go out on your boat. But make no mistake we need you to listen to what we need you to do," said Marceno, "Limit the exposure to the general public."

It's a warning and reminder for those looking to hit the water over the weekend, to help cut down on the spread of coronavirus. The sheriff's office also shared footage recorded by its helicopter to make the case it will be watching to see boaters are practicing social distancing and not docking near closed beaches.

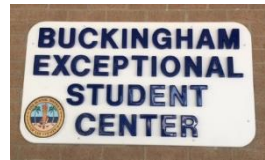
As of this writing, while there have been warnings given to some boaters, there have been no arrests of boaters recorded by Lee County authorities for social distancing offenses.

**Thank you, captains, for helping to keep us all safe and by continuing to honor safe distancing at the dock and on board!**



# Alva Area Lee County Schools

Alva, Buckingham, River Hall, and Riverdale



## #RUReady?

### FutureMakers Success Series

## LIVE WEBINARS

**EVENT DETAILS:**  
2nd Tuesday of the month,  
7:00-8:00 pm

Join us each month for an informative live video webinar where numerous higher education and community organizations discuss topics that are important to families navigating the high school to college process.

**REGISTRATION DETAILS:**  
Registration is **FREE**  
Registration provides you access to the live webinars to ask your questions or to access the replay at your convenience.  
[www.unmaze.me/webinars](http://www.unmaze.me/webinars)

**SPONSORS:** FutureMakers Coalition

**#stayready**

September 10th  
Testing: How 2 Prepare 4 ACT, SAT & PERT

October 15th  
College Applications: What U Need 2 Know

November 12th  
FAFSA: Accessing Free College Money

December 10th  
Scholarships: Tips & Tricks on Local, State & National

January 14th  
Mental Health: Living Your Best Life

February 11th  
Career Pathways: Finding Your Career

March 10th  
Academic Planning: Determine Your High School Options

April 14th  
Award Letters & Budgeting: How 2 Fund Your College Experience

## CLASSES for ADULTS 2020

AFFORDABLE. ENGAGING. FUN.

Art Series	<b>ACRYLIC PAINTING</b>	<b>DRAWING</b>	<b>FAMILY ART</b> <small>TREAT A FAMILY AND YOURSELF TO ART TOGETHER!</small>	<b>HAND BUILDING WITH CLAY</b>	<b>WATERCOLOR PAINTING</b>	<b>WATERCOLOR &amp; THE ART OF JAPANESE BOOK BINDING</b>
BLS/CPR	<b>BLS/CPR</b>	<b>FITNESS EVOLUTION</b>	<b>FITNESS EVOLUTION REFRESHER</b>	<b>GET FIT GET FIRM</b>	<b>MEDITATION</b>	Various Locations in Lee County
Health Series	<b>Health Series</b>	<b>PERSONALIZED EXERCISE &amp; NUTRITION</b>	<b>PERSONALIZED EXERCISE &amp; NUTRITION</b>	<b>STRETCHING</b>		

## Register TODAY!

# WWW.LEESCHOOLS.NET/LLC

Language Series	<b>AMERICAN SIGN LANGUAGE</b>	<b>AMERICAN SIGN LANGUAGE FOR FAMILIES</b>	<b>CONVERSATIONAL CREOLE</b>	<b>CONVERSATIONAL ENGLISH</b>	<b>ITALIAN BEGINNER</b>	<b>ITALIAN ADVANCED</b>	<b>ITALIAN CONVERSATION</b>
<b>CONVERSATIONAL MANDARIN CHINESE</b>	<b>SPANISH</b>	<b>CONVERSATIONAL SPANISH</b>	<b>ADAPTATION FOR THE BEGINNER &amp; BEYOND</b>	<b>CITIZENSHIP CLASSES</b>	<b>COMMUNITY BAND</b>		
<b>History: the 1960's</b>	<b>PRIVATE PILOT GROUND SCHOOL</b>	<b>ADOBE PHOTOSHOP</b>	<b>AUTOCAD DRAFTING SOFTWARE</b>	<b>COMPUTER BASICS</b>	<b>PERSONAL PARENTAL CONTROL</b>		
<b>DIGITAL MARKETING</b>	<b>HOW TO USE MY ANDROID DEVICE</b>	<b>MICROSOFT EXCEL</b>	<b>MICROSOFT OFFICE FOR BEGINNERS</b>	<b>WEB DESIGN</b>	<b>BBQ SMOOKING</b>		

Adult Enrichment Classes for Every Interest  
239-939-6321

**Grace UMC, Fort Myers Shores**

**Second Saturday Free Meal & Food Pantry, 9-11am**

**Call 239-205-3123**

## Alva Area FOOD PANTRIES

**St. Vincent DePaul RC**

**Our Lady's Cupboard Food Pantry**

Breakfast cereal and canned fruit continue to be needed in Our Lady's Cupboard Food Pantry. Call (239) 694-3985 for hours open.

**Charleston Park Community Center**

**FOOD PANTRY.**

Every 2<sup>nd</sup> and 4<sup>th</sup> Thursday at 10am-2pm

**ALVA UMC**

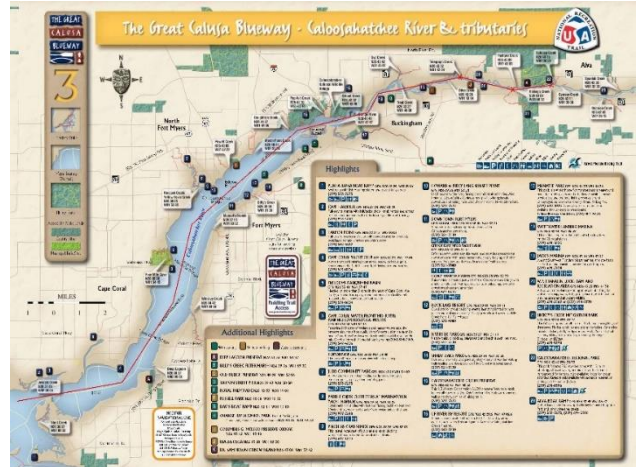
**Food Pantry @ Bethany House**

Food Pantry: 9am-12pm 1<sup>st</sup> & 3<sup>rd</sup> Wednesdays

Bread Pantry: 8am-10am 2<sup>nd</sup> & 4<sup>th</sup> Wednesday



Trail information is at  
[www.calusablueway.com](http://www.calusablueway.com) or  
[www.leeparks.org/blueway](http://www.leeparks.org/blueway).



**SWFL CRIME STOPPERS**

**SAY IT HERE!**  
**WHY?**  
We guarantee anonymity!  
We pay cash rewards.

**HOTLINE: 1-800-780-TIPS**  
**CLICK HERE TO SUBMIT A TIP**  
DOWNLOAD OUR P3 TIPS MOBILE APP FOR FREE

SWFL Crime Stoppers is NOT a substitute for calling 9-1-1. In the event of an emergency, please call 9-1-1. Those who submit a tip are called "tipsters" and will remain 100% anonymous. No caller ID. No recorded lines. No tracking of phone calls. We want your information, not your name!

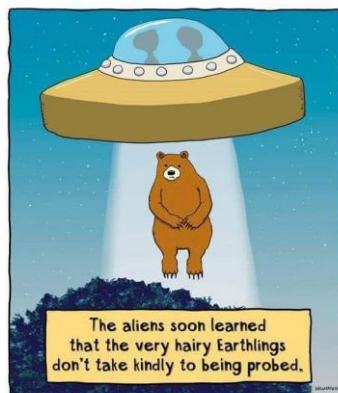
Put simply it is a three-part approach to solving the crime problem. SWFL Crime Stoppers relies on cooperation between our community, the media, and law enforcement to provide a flow of information about crime, wanted fugitives and suspicious activities.



## Mission

Volunteer Florida strengthens Florida's communities through national service, fostering volunteerism and leveraging resources.

<https://volunteer.volunteerflorida.org/>







**Effective immediately, persons who are experiencing homelessness (living outside, in a car, or other place not meant for human habitation) and seeking permanent housing resources in the Lee County CoC should contact 239-533-7900, and select options 1, 5, then 3, to complete a Coordinated Assessment.**

Due to current circumstances all assessments will be completed over the phone until further notice. See phone options in BOLD below. Please remember that due to Covid-19 ALL agencies are altering operations to ensure the health of clients and staff. Wait times for referrals, call backs, and access to housing and services will be longer than usual. Please remain patient and in communication as we work through these changes.

When normal operations are resumed persons experiencing homelessness can complete the assessment in the following ways:

By Phone: 239-533-7900 – Options 1, 5, then 3 (Mon-Fri 8am-5pm)

In-Person with Outreach Staff

In-Person at CCI (Mon, Tues, Thurs, Friday from 8am-12)

Veterans may also access the Coordinated Entry System at:

Jewish Family and Children's Services via phone 941-366-2224 extension 628 (Mon-Thurs 8:30-4:00pm)



## **Protecting Yourself Financially**

Federal, state, and local governments are working to respond to the growing public health threat of coronavirus, or COVID-19. As communities across the country are dealing with an increase in the number of reported cases, many areas are being impacted by the

temporary closure of businesses, schools and other public facilities or events, and in some cases, quarantines. While these actions are necessary steps to help reduce exposures, it may bring financial uncertainty for many people who could experience a loss of income due to illness or workplace closures.

As you plan for the potential impact of the coronavirus, there are a number of steps that you can take to help protect yourself or a loved one financially, both in the short and long term.

Steps to take if you have trouble paying your bills or meeting other financial obligations

If you have trouble paying your bills, or loans, or paying on time, there may be a number of options to help, especially if you reach out early to your lenders or creditors.

### **Contact your lenders and loan servicers:**

If you're not able to pay your bills on time, contact your lenders and servicers to let them know about your situation. Being behind on your payments can have a lasting impact on your credit. The Consumer Financial Protection Bureau (CFPB) and other financial regulators have encouraged financial institutions to work with their customers to meet their community needs.

Credit card companies and lenders may be able to offer you several options to help you. This could include waiving certain fees like ATM, overpayments, and late fees, as well as allowing you to delay, adjust, or skip some payments.

**When contacting your lenders, be prepared to explain:**

Your situation. How much you can afford to pay.

When you're likely to be able to restart regular payments in the case of mortgages, be prepared to discuss your income, expenses and assets.

If you are having trouble paying your auto loan payments your lender may have options that will help. Our tips include changing the date of your payment, requesting a payment plan, and asking for a payment extension.

If you have student loans, you may qualify for a delayed or reduced payment program. Just remember, even though you don't need to make payments now, interest will continue to accrue, and you will have to make up these amounts eventually. Contact your student loan servicer to find out more about your options. If you have a federal student loan, also ask your servicer about alternative repayment plans.

**Work with housing and credit counselors to understand your options**

These trained professionals provide advice for little or no cost, and they will work with you to discuss your situation, evaluate options, and even help you negotiate with your lenders and servicers.

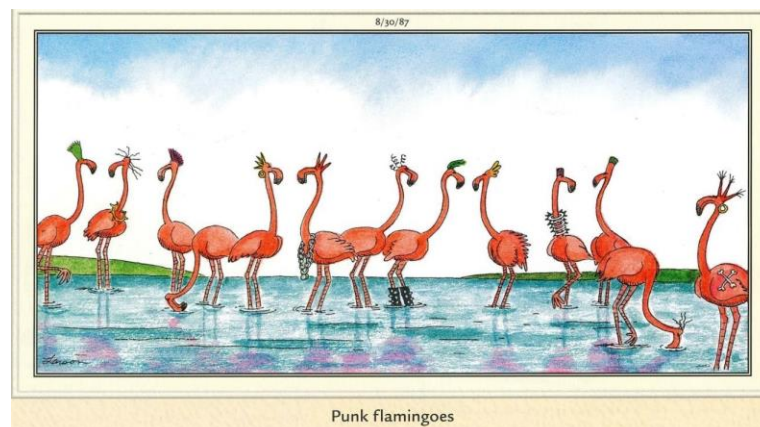
**HUD-Approved Housing Counselors:** The U.S. Department of Housing and Urban Development (HUD)-approved housing counselors can discuss options with you if you're having trouble paying your mortgage loan or reverse mortgage loan. This may also include forbearance or a modified payment program.

**Credit Counselors:** Reputable credit counseling organizations are generally non-profit organizations that can advise you on your money and debts, and help you with a budget. Some may also help you negotiate with creditors. There are specific questions to ask to help you find a credit counseling organization to work with.

**Warning:** If you're considering working with a debt settlement company to address your debts, be skeptical of any company that promises to do it for an upfront fee.

**Contact debt collectors:** If you currently have a debt in collections, you can work with collectors to identify a realistic repayment plan. The Bureau offers a number of resources for contacting and negotiating with debt collection companies.

**Check your credit reports:** If you're working with lenders on payment assistance programs or forbearance, routinely check your credit reports to make sure the statements are accurate and that any delinquencies have not been improperly reported. Your credit reports and scores play an important role in your future financial opportunities.



## Some of our local ALVA area churches:

### St. Vincent DePaul's RC Church

13031 Palm Beach Boulevard, Fort Myers, FL 33905

[www.stvincentftmyers.org](http://www.stvincentftmyers.org)

239-693-0818

### Countryside Wesleyan Church

17750 Palm Beach Blvd, Alva, FL 33920

239-368-3270

### Alva United Methodist Church

21440 Pearl St. P.O Box 96

Alva, FL 33920

[Alvamc@embargmail.com](mailto:Alvamc@embargmail.com)

239-728-2277

### Calvary Church

19850 Palm Beach Blvd

Alva, FL 33920

[www.calvarychurchswfl.org](http://www.calvarychurchswfl.org)

239-728-5566

### Alva Church of God

21520 Park St, Alva, Florida 33920

239-728-2644

### First Baptist Church of Alva

2790 Joel Blvd, Alva, FL, 33920

[www.alvabaptist.com](http://www.alvabaptist.com)

239-728-2034

### Liberation International Church

Avenue D, Charleston Park

Alva, FL 33920,

239-601-4870

### Grace United Methodist Church, Ft Myers Shores

14036 Matanzas Drive, Ft Myers, Florida 33905

[www.egracechurch.com](http://www.egracechurch.com)

239-694-2797

### New Hope Faith Temple of Jesus Christ

23210 Avenue D, Charleston Park

Alva, FL, 33920

239-770-4974

### Bethlehem Lutheran Church

14531 Old Olga Road,

Fort Myers, FL 33905

[www.blcefm.org](http://www.blcefm.org)

239-694-3878

### First Spanish Assembly of God Church

2219 Joel Blvd, Alva, FL 33920

239-728-5440

### Buckingham Presbyterian Church

4241 Buckingham Road

Fort Myers, 33905

239-694-2444

To have your church listed here simply contact me Ken DeWalt, at [kendewalt@ontheriver.org](mailto:kendewalt@ontheriver.org) with as much contact info as you can share.



# RECOVERY Groups in the Alva Area



**Types of 12 Step Programs in Lee County, FL:** Because Alcoholics Anonymous was exclusive to people who struggled with alcohol addiction, a vast array of other programs were formed to aid and support those in recovery from other addictive disorders. These include the following groups:

Any type of group you do not find listed below may be sought at this website:

<https://www.addicted.org/directory/category/lee-county-3.html>

**Before going to the meeting, confirm time and place by phone**

## ALVA:

**Alva Community Center**, 21471 N River Rd, Alva, FL 33920

-AA Way, 8pm Wednesdays, Big Book, OPEN

**St. Matthews House**, Cypress Creek & North River (rte 78) Roads, Alva

Jill's Place (for women) AND Justin's Place (for men), 239-687-7633 or [intake@stmatthewshouse.org](mailto:intake@stmatthewshouse.org).

<https://stmatthewshouse.org/whatwedo/justinsplace/jills-place-retreat-center>

## FORT MYERS SHORES:

**Grace UMC**, Fort Myers Shores, (239) 694-2797, 4036 Matanzas Dr, Fort Myers:

-AA Open Disc: Mon, Wed, Fri, 12pm, office

-AA men: Mon, 7pm, office

-AA Women: Tues, 7pm, office

-Nar-Anon: Wed, 6:30pm, Family Room

-AA Open Disc: Thu, 8pm, Connections Cafe

-AL Anon: Fri, 12pm, Classroom 2

-AA Open Speaker: Sat, 7pm, Connection Cafe

-NA: Sat, 6:30pm, Classroom 2

-NA Step: Sun, 6pm, Classroom 2

-CHOOSE RECOVERY: 6:00pm, Grace UMC Shores  
Facebook Page LIVE until COVID-19 is under control.

**St. Vincent De Paul RC**, 13031 Palm Beach Blvd, Fort Myers:

-Fort Myers Shores Group OStAH – Tuesday, 8:00 pm

Calvary Assembly of God, 11431 Palm Beach Blvd, Fort Myers:

-Night Owls OD – Saturday, 10:05 pm

## LEHIGH ACRES:

**-AA SUNRISE GROUP - MONDAYS, WEDNESDAYS, FRIDAYS & SATURDAYS 7AM**

705 Leeland Heights Blvd E, Lehigh Acres

(239) 275-5111

**LEHIGH ACRES (cont):**

**-AA MONDAY AT A TIME - MONDAY 6:30PM**

5513 8th St W, Lehigh Acres

(239) 275-5111

**-AA CHAIR'S CHOICE - TUESDAY 6:30PM**

5513 8th St W, Lehigh Acres

(239) 275-5111

**-AA SPIRITUAL SEARCH GROUP - TUESDAY 8PM**

705 Leeland Heights Blvd E, Lehigh Acres

(239) 275-5111

**-AA THIRSTY THURSDAYS - THURSDAY 6:30PM**

5513 8th St W, Lehigh Acres

(239) 275-5111

**-AA HERE AND NOW- SUNDAY 6:30PM**

5513 8th St W, Lehigh Acres, 33971,  
(239) 275-5111

**-NA HOPE WITHOUT DOPE - THURSDAY & SATURDAY 6:30PM**

705 Leland Heights Blvd. E., Lehigh Acres,  
(866) 819-5346

**-AA LEHIGH SUNDAY NIGHT - SUNDAY 8PM**

705 Leeland Heights Blvd E, Lehigh Acres  
(239) 275-5111

**-AA HEARD IT THROUGH THE GRAPEVINE - FRIDAY 6:30PM**

5513 8th St W, Lehigh Acres  
(239) 275-5111

**-AL ANON MOVING FORWARD AFG - MONDAY 10AM**

705 Leeland Heights Blvd E, Lehigh Acres  
(888) 425-2666

**-AA FIRST THINGS FIRST - MON-SUN 7AM**

5513 8th St W, Lehigh Acres  
(239) 275-5111

**-AA NOONERS - MON-SUN 12PM**

705 Leeland Heights Blvd E, Lehigh Acres  
(239) 275-5111

**LABELLE:**

**Good Shepherd Church, (239) 275-5111, 1098  
Collingswood Pkwy, Labelle**

-AA-PORT LABELLE GROUP – ODH- SUNDAY 7PM

-MAKING THE EFFORT -OLbHD- MONDAY 7:00 PM

-AS BILL SEES IT- OD- SATURDAY 9:00AM

-WED BIG BOOK GROUP- OBBH- WEDNESDAY NOON

-OPEN DISCUSSION -ODH- FRIDAY 7:00PM

**First Christian Church, Rte 29 & Ford Ave, LaBelle**

-LABELLE GROUP-ODAH- THURSDAY 7:00PM

-STEP GROUP-Cst- TUESDAY 7:00PM

**-AI Anon- AFG - THURSDAY 7PM**

138 Ford Ave, Labelle  
(888) 425-2666

**-AA-THURSDAY 7PM**

138 Ford Ave, Labelle  
(239) 275-5111

**-AA-MEETING AT THE INN - WEDNESDAY 7:15PM**

Port LaBelle Inn, 1568 Oxbow Dr, Labelle  
(239) 275-5111

**NOT TODAY - MONDAY 6:00PM**

133 N Bridge St, Labelle  
(866) 819-5346

**If you know of any other 12 step or non-12 step recovery group in the Alva area (From Hendry County Line to Fort Myers Shores, north and south of our river) please let me know its name, location and the phone number for information to list here. Thank you! [kendewalt@ontheriver.org](mailto:kendewalt@ontheriver.org)**

**LEE COUNTY  
EMERGENCY**

**& SERVICE CONTACT INFORMATION**

ACT-Abuse Shelter (Domestic Violence) 939-3112  
Addiction Services (Salus Care) 332-6989  
Alcoholics Anonymous 275-5111  
Ambulance (emergency) **9-1-1**  
Animal Services 533-3353  
Citizens Dispute (Mediation) 533-2885  
Chamber of Commerce SW Fla. 275-2102  
Child Abuse 800-962-2873  
Child Support Enforcement 877-769-0251  
Clerk of Courts 533-5000  
Code Enforcement 533-8895  
Clear Point Credit Counseling 278-3121  
County Commission 533-2259  
Dead Animal Removal 949-6246  
Division of Motor Vehicles 533-6000  
Dept of Transportation-County 533-8580  
Drug Abuse (Salus Care) 275-3222  
Economic Crimes Unit 258-3240  
Elder Abuse Hotline 800-962-2873  
Elder Helpline United Way 2-1-1  
**Emergencies 9-1-1**  
Fraud Line (LCSO) 258-3287  
Health Department 332-9647  
Humane Society (Gulf Coast) 332-0364  
Lee County Transit (Lee Tran) 533-8726  
Mental Health (Salus Care) 275-3222  
Legal Aid 334-6118  
Libraries 479-4636  
Parks & Recreation 533-7275  
Poison Information Center 800-222-1222  
Probation Office (County) 533-9199  
Probation Office (State) 338-2349  
Public Defender 533-2911  
Red Cross 278-3401  
School Board 334-1102  
School Transportation/Bus Barn 590-4000  
Social Security Administration 800-772-1213  
State Attorney 533-1000  
Suicide Prevention Lifeline 800-273-8255  
Supervisor of Elections 533-8683  
Tax Collector 533-6000  
Veterans Services Office 800-827-1000

**Lee County Sheriff's Office Headquarters**  
14750 Six Mile Cypress Pkwy  
Ft. Myers, FL 33912 477-1000

**North District Substation**  
121 Pondella Road  
N. Ft. Myers, FL 33903 477-1810

**East District Substation**  
1301 Homestead Road North  
Lehigh Acres, FL 33936 477-1820

**West District Substation**  
15650 Pine Ridge Road  
Ft. Myers, FL 33908 477-1830

**South District Substation**  
8951 Bonita Beach Road #565  
Bonita Springs, FL 34135 477-1840

**Bonita Springs Substation**  
10520 Reynolds St  
Bonita Springs, FL 34135 477-1140

**Central District Substation**  
14750 Six Mile Cypress Pkwy.  
Ft. Myers, FL 33912 477-1850

**Gulf Substation** 282-5766

**Lee County Jail (inmate information)**  
2115 Dr. Martin Luther King, Jr. Blvd  
Ft. Myers, FL 33901 477-1500

**Civil Process**  
2072 Victoria Avenue  
Ft. Myers, FL 33901 477-1353

**Lee County Gun Range**  
6570 Felix Romano Avenue  
Fort Myers, FL 33905 690-3999

**Community Relations** 258-3280  
**Fraud Line** 258-3292

**Juvenile Assessment Center (JAC)**  
2115 Dr. Martin Luther King, Jr. Blvd  
Ft. Myers, FL 33901 344-5100

**FEDERAL, STATE & LOCAL LAW  
ENFORCEMENT**

Fort Myers Police 321-7700  
Cape Coral Police 574-3223  
Sanibel Police 472-3111  
Port Authority Police 590-4810  
Florida Highway Patrol 278-7100  
Federal Bureau of Investigations 337-7171  
Drug Enforcement Agency (DEA) 275-3662  
Fla. Department of Law Enforcement 278-7080  
Federal Government Info. Center 800/688-9889  
Fish & Wildlife Commission 863-648-3200





*"Fostering a safe community to live, play and work."*



## Fit-Friendly Southwest Florida

In response to concerns about the rising level of obesity, heart disease and diabetes, the Fit-Friendly Coalition of Southwest Florida is teaming up with area organizations and businesses. The goal is to offer education and awareness about healthy lifestyles through programs that encourage physical activity and smart food choices.

Start! Fit-Friendly Companies is a national program that annually recognizes companies for promoting physical activity and health in the workplace. Worksite wellness programs can help people be more aware of the major risk factors heart disease that they can modify and potentially change – smoking, being overweight, high blood pressure, high cholesterol and diabetes.

According to the Fit-Friendly Coalition, it is estimated that companies can save up to \$15 for every \$1 spent on health and wellness within 12 to 18 months of implementing a worksite wellness program. Each employee who works to lower their risk status and maintains it can save the company an estimated \$53 per year.

For more information about Fit-Friendly Southwest Florida, please call the Lee County Injury Prevention Coalition speaker's bureau at 239-330-2250. There is no charge for this community service.

For more information on how you can join LCIPC, become a volunteer or to schedule a speaker, contact us today!

Brian Raimondo

Chairperson, Lee County Injury Prevention Coalition

Lee County MPO

239-330-2240

[braimondo@leempo.com](mailto:braimondo@leempo.com)

[ipcleeecounty@gmail.com](mailto:ipcleeecounty@gmail.com)



---

*Special thanks to all who financially support the mission of*  
**ON THE RIVER.**

*We especially encourage our readers to patronize the professional and community supporters who advertise below.*

# **WE WRITE ALL HOMES INCLUDING OLDER HOMES!!**

## **INTEGRITY INSURANCE AGENCY**



128 W. Charlotte Ave, Punta Gorda, FL 33950



INTEGRITY INSURANCE AGENCY



The Trusted Choice®

Integrity Insurance Agency has been serving all of Florida for over 20 years. The majority of our business is right here in SW Florida. A team of agents, with over 100 years of total experience, we are dedicated to the service we provide to all our clients. We can handle any insurance situation you may have. We provide coverage and service for all items listed below.

Auto, Homeowners, Renters, Condo, Manufactured Homes, Casitas, Flood, Motorcycle, RV, Boats, Golf Carts, General Liability, Commercial Package, Commercial Auto, Workers Comp, Bonds, Liquor Liability, Special Events, Life Insurance, Health Insurance, Long Term Care, Medicare Products, and Professional Liability.

We would be proud to be called your insurance agency. Since we are an Independent Agency, we have a number of companies we work with to get you the best coverage for the best price. Call Integrity today and experience the client services we provide. **941-766-1411**. You can go on our website to get more information at [iiagencies.com](http://iiagencies.com)



Cell  
239-340-3904  
Office  
239-693-1959  
Email  
PattyWalkerREMAX@gmail.com  
Web  
GulfCoastLivingPatty.com  
Address  
12928 Palm Beach Blvd., Ste A  
Fort Myers, FL 33905  
Each Office Independently Owned & Operated



Serving all  
North East Lee County's  
real estate needs for  
47 Years  
Broker Tad Miller

**New Hope Faith Temple  
of Jesus Christ**



**THE  
WORD  
CHURCH**

*Join Us*

**SUN School 9AM** **SUN Service 10AM** **WED 630PM**

Overseers  
Bishop James & Charlotte Neal  
Co-Pastor ReJoyce Baskin  
Contact 239-770-4974

**23210 Ave D. Alva FL 33920**

Made with PosterMyWall





*We love what we do!*  
**LET US SERVE YOU!**



**2020 in one sentence:  
A roll of toilet paper is  
worth more than a  
barrel of oil.**

## ON THE RIVER Alva Area Newsletter Advertising Rates as of January 17, 2020

This monthly newsletter is a free to subscriber on-line offering. We are not offering anything in print form at this time. We currently have over 800 subscribers. We encourage folk to share it with anyone and in any way they wish, and we place the newsletter in the Alva Florida Friends and Family Facebook Page which has over 2,200 subscribers, and the Alva Area NEXT DOOR web page which has over 3,300 subscribers.

Ads run full across the 9x11" OTR page, then down the fraction of the page you choose.

Advertising rates :

1/8th Page... one issue: \$15.00, six issues: \$12.00, twelve issues: \$10.00

¼ Page... one issue: \$25.00, six issues: \$20.00, twelve issues: \$17.00

½ Page... one issue: \$45.00, six issues: \$35.00, twelve issues: \$30.00

Full Page... one issue: \$75.00, six issues: \$60.00, twelve issues: \$50.00

Ads will only appear on pages after all articles and nonprofit promotions are formatted. we can format ads with WORD.doc copy and j.peg photos or logos. we can also scan any copy and/or photos you provide to create a single j.peg of your ad.

You will receive a screenshot proof of the ad as soon as we have it formatted for your approval before its issue is published. Lack of response to the proof will be considered acceptance.

Full payment for all issues contracted for is to be made in full by the 15th of the month preceding the first month in which the ad is to appear, which is also the date the ad copy is to be received. Payments are to be by check (made out to Ramona DeWalt, noted: OTR.

CONTACT: Ken DeWalt, publisher, with any questions. [kendewalt@ontheriver.org](mailto:kendewalt@ontheriver.org)

---